

GLOBAL GO GREEN

looking to the future with solar power



Global go solar!

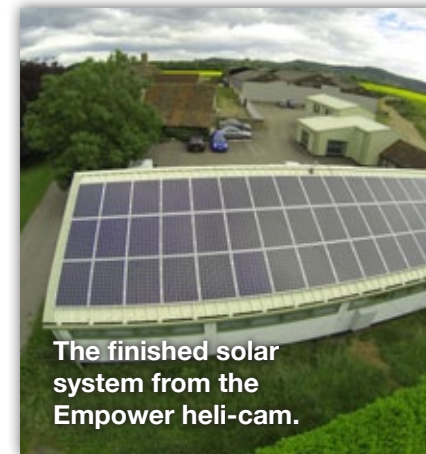
As the energy management specialists, we are passionate about efficient energy and affordable heating, ventilation and climate controls within commercial buildings that are easy to use.

Practising what we preach, our office now boasts an impressive **B48 energy performance rating** thanks to measures including intelligent DALI LED Lighting System and LIGO interface, Trend 963 & a Tridium HMI and smart electric radiators – all nicely finished off with our brand new all high efficiency Solaredge solar PV system from Empower Energy.

We chose the high performance Solaredge solution over standard panels to give us an increased yield and a **boosted ROI of 11.1%**, as well as an integrated online monitoring system – allowing us to track performance down to an individual panel level.

We are delighted with our new system and through our new links with Empower we can now able to offer advanced solar PV systems into our building management system solutions.

To find out more about this new service, please get in touch with us on 01453 520369 or email controls@gbc-ltd.com.



SYSTEM KEY FACTS

INSTALLED **JUNE 2013**

SIZE **15 KWP**

PANELS USED **MAGE**

INVERTER **SOLAREEDGE**

ANNUAL OUTPUT **13,152 KWH**

PROJECTED ROI **11.1%**



Single phase inverter



High efficiency panels

“The friendliest BMS specialist.”



Global Building Controls Ltd
Gbc House
Charfield Barns Business Park
Charfield, Gloucestershire
GL12 8Sp



Tel: **01453 520369**
Email: **controls@gbc-ltd.com**
Web: **gbc-ltd.com**

